

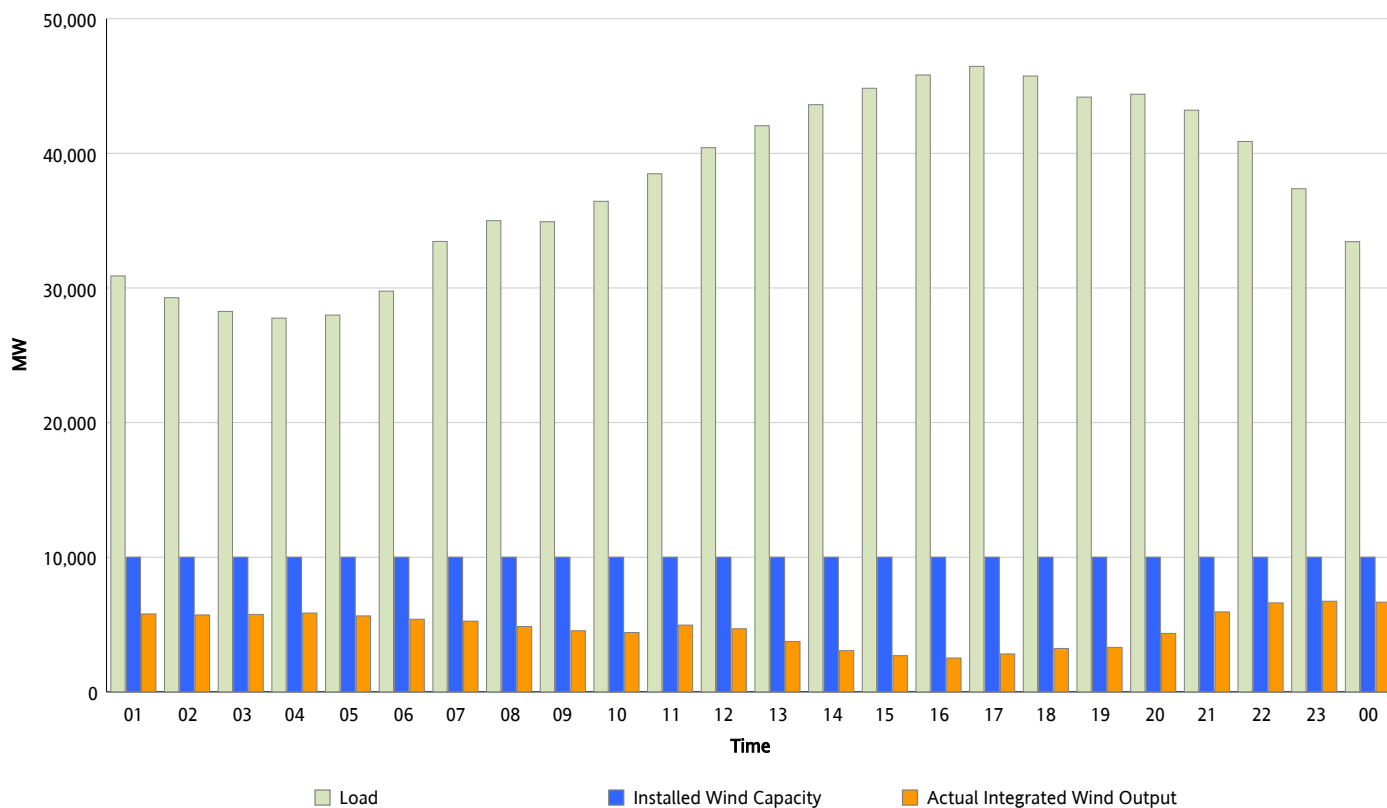


## ERCOT Grid Operations

### Wind Integration Report : 10/23/2012

Peak Load	46,459 MW
Load Peak Hour (HE)	17
Wind Over Peak	2,816 MW
Wind Record 06/19/12	8,368 MW
Max Wind Value*	6,899 MW
Wind Peak Time	22:27
Wind Integration %	18.3 %

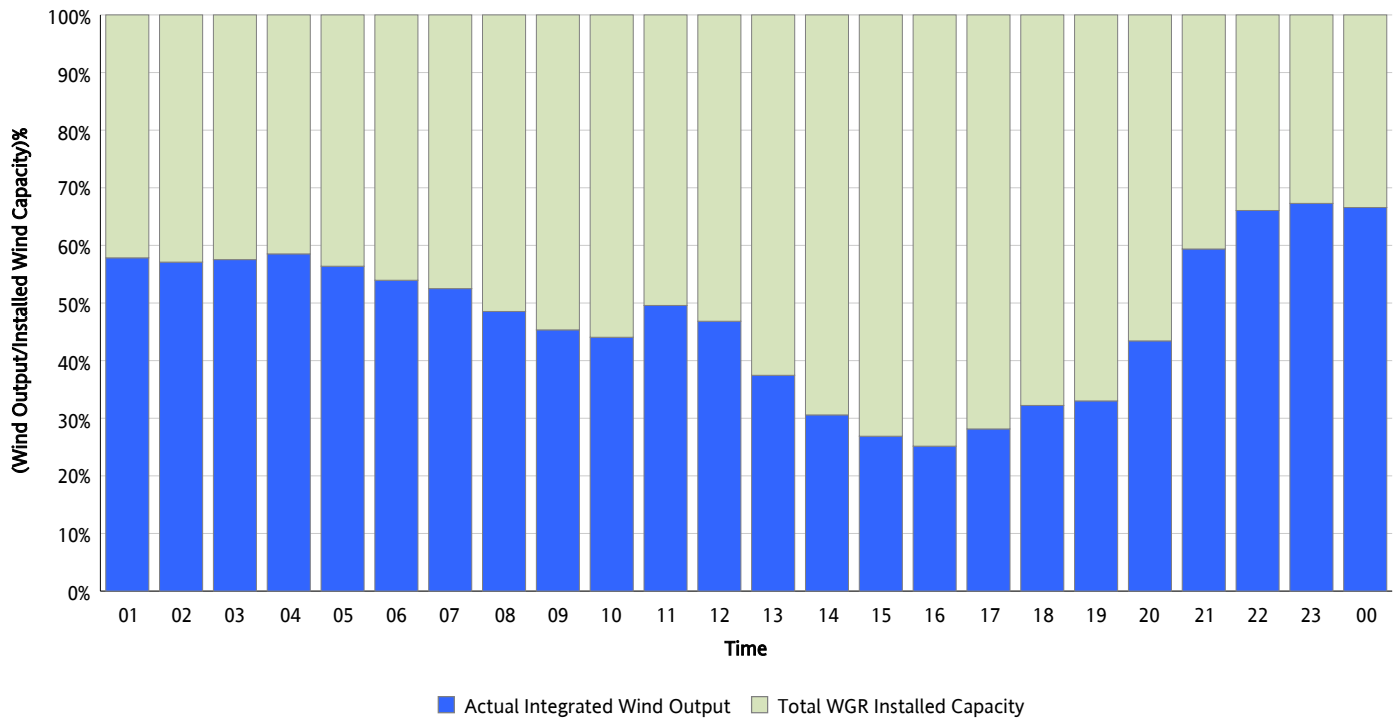
**Hourly Average Actual Load vs. Actual Wind Output**  
10/23/2012



\* Wind Record and Wind Max represent instantaneous values and the rest of the values are integrated over the hour

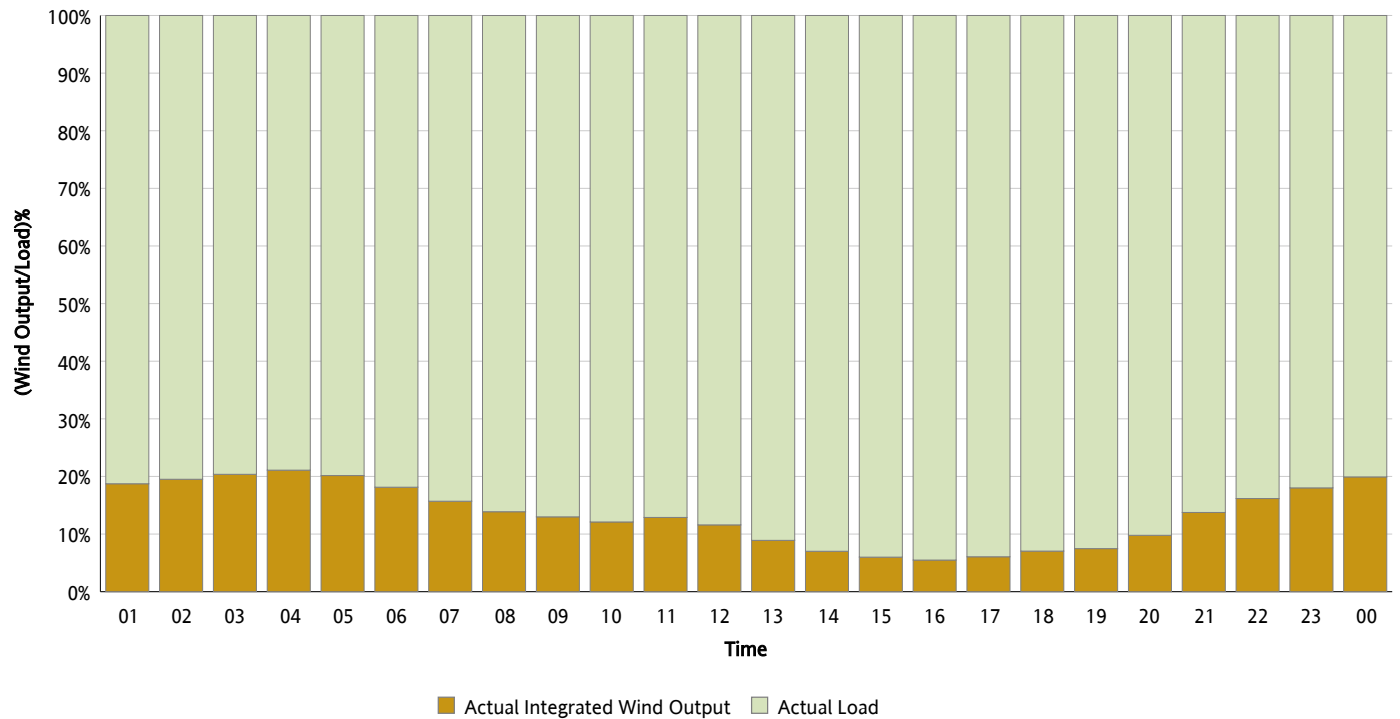
## Actual Wind Output as a Percentage of the Total Installed Wind Capacity

10/23/2012



## Actual Wind Output as a Percentage of the ERCOT Load

10/23/2012



## ERCOT Load vs. Actual Wind Output

10/16/2012 - 10/23/2012

